

PYRAMID PRESS

ASHRAE – Memphis Chapter
www.angelfire.com/tn/ashrae/

January, 2006

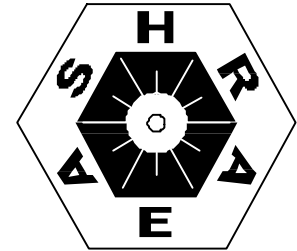
LUNCH MEETING 11:30 TUESDAY,
JANUARY 10, 2006, KEMMONS
WILSON CENTER HOLIDAY INN, 3700
CENTRAL AVENUE

MICHAEL C. CONNOR, PE
Connor Engineering Solutions, LLC
Alpharetta, Georgia

Mike C. Connor is a principal of Connor Engineering Solutions, LLC, based in Alpharetta, Georgia. Prior to going back into private practice, Mike was the Chief Engineer for McKenney's Mechanical Contractors, located in Atlanta, Georgia. During his stay with McKenney's, he participated in numerous design/build projects gaining the perspective of the contractor through the execution of these projects. These projects ranged from office buildings and hotels to laboratories and pharmaceutical manufacturing facilities. He is a member of TC 9.2, Industrial Air Conditioning, where he served as Chair from 1997 to 1999, and is a member of TC 1.7, General Business and Legal Education.

Mike was awarded the "Engineer of the Year in Construction" by the ASHRAE Atlanta Chapter for 1995-1996 and has had several publications in the *ASHRAE Journal*, the most recent being "Liability Exposure in Design/Build," in August 2003. Mike is a frequent speaker at ASHRAE meetings on subjects as diverse as building commissioning to the design of process air systems, and has been published in the journals of other engineering societies including the International Society for Pharmaceutical Engineering (ISPE) and the *Journal of Validation Technology*.

Lecture Topic Continued on Page 2.



Memphis Chapter Contacts

PRESIDENT:

Evans Jack: 324-6610
Fax: 324-6612

PRESIDENT ELECT:

James Copeland 224-6805
Cell: 508-4899
Fax: 224-4331

VICE PRESIDENT:

John Colmer: 761-0885
Fax: 761-2943

SECRETARY:

Brent Wiseman:
Fax:

TREASURER:

Brad Grammar:
Fax:

MEMBERSHIP:

Jason Snyder: 683-3900
Fax: 683-3990

NEWSLETTER:

Denver Glazier: 383-5717
Fax: 383-5758



THE PRESIDENT'S CORNER

Members,

At ASHRAE'06 - Input Sought in Proposed ASHRAE Risk Management Guideline

CHICAGO - Guidance for the practical evaluation, design and implementation of measures to reduce multiple risks in buildings will be provided through a proposed guideline from ASHRAE.

"We want to provide practitioners with a voluntary process by which they can perform vulnerability assessments," George Glavis, chair of the committee writing the guideline. "Based on the results of these assessments, practitioners can implement the guideline's recommended protective measures that would benefit occupants during normal operations as well as during emergencies."

Input into ASHRAE's proposed Guideline 29P, Guideline for Risk Management of Public Health and Safety in Buildings, will be sought at a forum at the Society's 2006 Winter Meeting, Jan. 21-25, Chicago.

What Guidance Should ASHRAE Provide for Reducing Multi-Hazard Vulnerability will be held from 9:50 a.m. Sunday, Jan. 22. Expedited development of the guideline is being funded in part through a grant from the Alfred P. Sloan Foundation.

It will build on an earlier report from ASHRAE that addresses health, safety and environmental security under extraordinary incidents, according to Glavis, lead mechanical engineer for the State Department Overseas Building Operations.

The proposed guideline will contain recommendations for management of the risk of extraordinary incidents in buildings, including fire, seismic events, chemical and biological releases, blast and other extraordinary hazards. It will address aspects of building performance that affect occupant health and safety, including egress, chemical, biological and radiological protection, fire protection, smoke removal, filtration, air quality, and building envelope.

THE HISTORIAN

William J. Jason, Professional Engineer

Bill attended elementary and secondary school in New Orleans, and entered Louisiana State University in 1940 (at age 15). After service in the Army Air Force during WW II, he received his BS in Mechanical Engineering in 1949 from LSU. He then re-located to Memphis, where he has resided since.

After working for several distributors and contractors (including his own firm) he went to work with John Clark Hudson in Sardis, Mississippi. While there, he was given the responsibility for designing mechanical systems for the State Capitol historic restoration, and for the University of Mississippi Medical Center Acute Services Wing which included 16 operating rooms. He also designed a test facility for the Holley Carburetor Co. in Union City, Tennessee, which received a first-place ASHRAE Region VII TEGA award.

Bill retired in October, 1989 as Senior Vice-President and Director of Engineering of The Cromwell Firm (a 45 person A/E firm). Bill immediately opened his own office. He is licensed to practice in 25 states, and has designed HVAC systems for industrial, educational, commercial and religious projects in these states, as well as the UK. He has received first place ASHRAE Region VII TEGA awards for a "Water Jet Cutter Facility" at LTV Aerospace, Dallas, TX, and for "Boiler Room Modifications" at Dobbs International Services, Denver, Co.

He is a Life Member of ASHRAE, and served as President of the Memphis Chapter in 1979-1980. He has been Region VII Historian since 2004.

Bill is chairman of the Memphis/Shelby County Mechanical Advisory Board, and is a member of the Memphis/Sheby County Board of Building Code Appeals.

He is a Thirty-Third Degree Mason, and is a Past Potentate of Al Chymia Shriners, where he is a member of the Brass Band.

Bill and Renee have been married for over 61 years, and have two sons, four grandsons and a great-granddaughter. They have been members of Temple Israel for more than fifty years.



LECTURE TOPIC CONT.

The Technical and Legal Aspects of Design/Build

Design/Build is the oldest construction delivery method dating back to the time when human beings began to engage in construction activities for delivery to an owner for reimbursement. Dating back to 1800 B.C., the Code of Hamurabi formed the basis of many of our laws today – including construction law. This presentation will trace the origins of design/build up to the methods and procedures for how this construction method is commonly executed.

The presentation will show where and why design/build is being used and what market sectors are growing in its use. Also presented will be profiles of the types of engineers who are well suited for design work under this procurement method and how selection of a design/build team is typically done.

Liability issues and differences from “traditional” methods will be presented so that the audience will have a clear understanding of the potential pitfalls of entering into design/build contracts.

PROGRAMS

- **January 10th, 2006** – Kemmons Wilson Center, University of Memphis, 3700 Central Ave. Speaker – Mike Conner ASHRAE Distinguished Lecturer
- **February 13th, 2006** – Kemmons Wilson Center, University of Memphis, 3700 Central Ave. Speaker – Tekworx Control System Strategies
- **March 14th, 2006** – Kemmons Wilson Center, University of Memphis, 3700 Central Ave. Speaker – Daniel Int-Hout ASHRAE Distinguished Lecturer
- **April 19th, 2006** – Kemmons Wilson Center, University of Memphis, 3700 Central Ave. Topic – Sustainability and the Building Environment
- **May 9th, 2006** – Kemmons Wilson Center, University of Memphis, 3700 Central Ave. Topic – Panel Discussion TBA.

MEMBER NOTICES

ASHRAE MEMBERSHIP GROWTH

I am pleased to hear you have colleagues interested in becoming members of ASHRAE. Please inform them to log on to <http://www.ashrae.org> to fill out an electronic application. Once at the site click on “Join ASHRAE” on the left side of the page then scroll down to the appropriate application for the desired membership grade (This link will take you directly to the membership application selection page - <http://www.ashrae.org/template/AboutLinkLanding/category/1872;jsessionid=aaaglpHers1BeQ>) . Also, have each interested colleague go to the Memphis Chapter Internet site (<http://www.angelfire.com/tn/ashrae/page2.html>) and fill out a local chapter application. If the prospective members do not have internet access just have them contact me directly and give me their mailing address for me to send hard copies.

Total dues are \$150 National and \$85 local. Local dues are only \$15 if they will not attend the lunch meetings.

Please feel free to call or write with any questions.

Jason Snyder, P.E.
(ASHRAE Membership Promotion Chairman)
Mechanical Division
Eilers, Oakley, Chester, and Rike, Inc.
5100 Poplar, Suite 1600
Memphis, TN 38137-1601
Phone: Memphis - (901) 683-3900; Jackson - (731) 664-7440
Fax: Memphis - (901) 683-3990; Jackson - (901) 531-8422
Email: jsnyder@eocr-inc.com

UNIVERSITY OF MEMPHIS STUDENT CHAPTER ACKNOWLEDGEMENTS:

The student chapter at the University of Memphis made it into this month's Insights newsletter that goes to the nationwide ASHRAE membership. Page 4 of the December 2005 newsletter has a picture from the FedEx Forum tour. Let's congratulate our student members for their accomplishments.



MEMBER NOTICES

National Engineers Week will be celebrated February 19-25, 2006! Once again, thousands of your fellow colleagues from all engineering disciplines throughout the country will be taking part in this exciting event. Many of the outreach programs emphasize the importance of math and science to the "next generation" of children and young adults. Soon, ASHRAE Chapter Student Activities Chairs will be receiving the annual EWeek packet in the mail with information to include ideas for Introduce-a-Girl-to-Engineering Day programs. Visit the EWeek site at: www.eweek.org for more information.

The sixth annual **Introduce-a-Girl-to-Engineering Day** is February 23, 2006. Hundreds of organizations worldwide will mobilize tens of thousands of women engineers – along with support from their male colleagues – to reach one million girls that day and throughout the year with direct, hands-on mentoring activities. "Girl Day" is the centerpiece of Engineers Week's annual outreach to encourage underrepresented groups to consider a career in engineering. Open the attached PDF file for programming ideas for Introduce-a-Girl-to-Engineering Day (this has been included in your packets and will be available on the website with live links soon!). Visit the EWeek site at: <http://www.eweek.org/site/News/Eweek/girlsday.shtml> for additional Girl Day programming resources.

New this year, ASHRAE is offering free buttons and certificates for any girls who participate in programs offered by ASHRAE chapters in support of Introduce-a-Girl-to-Engineering Day. Chapter officers can request them by sending an email to apruett@ashrae.org. Include your name, member number, mailing address and phone number, and quantity needed of each item. On the EWeek site, chapters can purchase general EWeek buttons and certificates. The catalog will be in the packet you will be receiving.

MEMBER NOTICES

Please also check the EWeek site for information about the Global Marathon! The "Global Marathon For, By and About Women in Engineering" running continuously from Noon (EST) Thursday, March 23 through Noon (EST) Friday, March 24 at the Engineers Week web site – www.eweek.org. Dozens of presentations and question and answer sessions originating from points around the globe will heighten awareness of science, technology, engineering, and mathematics issues among pre-college, college, and young career women, and examine issues such as retaining women in college engineering programs and the workplace.

Please send me an email message if you have any questions about EWeek. *Pass this information along to interested chapter members.* We'd like to see all ASHRAE Chapters getting involved in this great program to boost interest in engineering among kids, teenagers, and college students!

Sincerely,
Ashley Pruett

cc: ASHRAE Chapter Presidents
Regional Vice Chairs for Student Activities
ASHRAE Student Branch Advisors
Jeff Littleton, ASHRAE Executive Vice President
Carolyn Kettering, ASHRAE Director of Member Services
Leslie Collins, National Engineers Week Executive Director

Ashley M. Pruett
ASHRAE
Manager of Student Activities

1791 Tullie Circle NE
Atlanta, GA 30329

Phone: (678) 539-1212

Fax: (678) 539-2212

E-mail: apruett@ashrae.org



MEMBER NOTICES

Sustainability Topic of ASHRAE Satellite Broadcast

A satellite broadcast is being offered by ASHRAE to fulfill its goal of promoting building sustainability as a means to provide a safe, healthy, comfortable environment while simultaneously limiting the impact on the Earth's natural resources. Information about building sustainability principles, practices and emerging concepts will be presented in the free April 19, 2006, satellite broadcast and Webcast, Sustainability and the Building Environment. The program is sponsored by ASHRAE's Chapter Technology Transfer Committee (CTTC).

"This broadcast will benefit all of the team members involved in the design, construction, start-up, and operation phases of a facility," said Jon Christopher Larry, chair of CTTC. "Viewers will be given information and sources to assist them when they are faced with the situation where a green design must be done. The green building industry will also benefit from the engineering input from ASHRAE."

The speakers for the broadcast will provide guidance on how to practice green building design. They are: Joe Van Belleghem, Partner, Windmill Developments, Victoria, Canada; Hal Levin, Fellow ASHRAE, Research Architect, Building Ecology Research Group, Santa Cruz, California.; Jean Lupinacci, Director, ENERGY STAR Commercial and Industrial Branch, Climate Protection Partnerships Division, U.S. Environmental Protection Agency; Kevin Hydes, P.E., P.Eng., President and CEO, Keen Engineering, Montreal, Canada; and Malcolm Lewis, Ph.D., P.E., President, CTG Energetics, Irvine, California.

The broadcast will be similar to the April 2005 Mold in the Building Environment Broadcast/Webcast viewed by some 16,000 viewers at 1,700 locations. Visit www.ashrae.org/greenbuildingsbroadcast for the latest information regarding the broadcast/Webcast and ASHRAE's work on sustainability.

PRESIDENT'S COL CONT.

Homeland security also will be discussed in a forum that questions how hybrid 100 percent outside air systems improve homeland security and sustainability. The need to develop effective HVAC&R strategies to protect building occupants against the threat of chemical-biological warfare (CBW) is often seen as having a priority over making those same buildings energy efficient. The forum examines whether hybrid 100 percent outside air systems can reduce the threat of CBW without paying an energy penalty to do so. It takes place at 9 a.m. Wednesday, Jan. 25.

A seminar examines analysis, design and operation of HVAC&R and supporting systems as a way to protect from natural or intentional events. It is held from 10:15 a.m.-12:15 p.m. Wednesday, Jan. 25.

For more information on ASHRAE's work in homeland security, visit www.ashrae.org/homelandsecurity.

Held with the ASHRAE Winter Meeting is the ASHRAE co-sponsored International Air-Conditioning, Heating, Refrigerating Exposition, Jan. 23-25, at McCormick Place. For more information, contact International Exposition Company at 203-221-9232, info@ahrexpo.com, www.ahrexpo.com.

Registration for the 2006 ASHRAE Winter Meeting is \$635 (\$375, ASHRAE member) prior to Dec. 2. After Dec. 2, the registration fee will be \$750 (\$490, ASHRAE member). For more information or to register, visit www.ashrae.org/chicago. Johnson Controls is a platinum sponsor of the meeting.

I wanted to share this information,

Sincerely,

Evans Jack
President
Engineered Mechanical Equipment, Inc.
P.O. Box 22275
Memphis, TN 38122-0275
(901)324-6610
(901)324-6612 fax
emesales@bellsouth.net



MEMBER NOTICES – Code Issues

There's a New Sheriff in Town

Yeah, this is tongue-in-cheek, but in a way, it's correct. Martin Toth is the (relatively) new Chief Boiler Inspector for Tennessee. Martin's task is to make sure boiler installations in Tennessee follow the law.

At a recent hearing of the State Boiler Board, Martin made a comment about a boiler installation not having "the required shut-off button outside the boiler room door". I said to myself, "What required button?"

I came back and poured over the State Boiler Code (downloadable at <http://www.tennessee.gov/labor-wfd/boilers.html>). I could not find a requirement for this button.

I called Martin and asked. His answer was a surprise. He said to look in CSD-1.

I've heard about CSD-1 from the boiler vendors for years. This is an ASME document and is adopted as part of the State Boiler Code by reference "0800-3-3-.02, (4)". I knew that boilers in Tennessee had to comply with CSD-1.

I always understood CSD-1 to require special components for controls and the gas train. I have been unaware that CSD-1 required anything beyond that. All I thought I had to do was make sure the boiler specification covered compliance with CSD-1. Martin educated me. Part CE of CSD-1 requires:

A manually operated remote shutdown switch or circuit breaker shall be located just outside the boiler room door and marked for easy identification...If the boiler room door is on the building exterior, the switch should be located just inside the door. If there is more than one door to the boiler room, there should be a switch located at each door.

Further, there are specific requirements for the shutdown switch that should be followed.

MEMBER NOTICES – Code Issues Continued

Martin explained that this requirement has not previously been enforced, but will be starting in April 2006 for new installations or renovations. He told me it will not be required by inspectors doing their inspections of existing installations. He also educated me on which units fall under CSD-1:

"Any high or low pressure steam or hot water heating boiler with input capacity of 400,000 BTU or greater must follow CSD-1. Water heaters for potable water, regardless of input capacity, are exempt from CSD-1."

Maybe we should consider asking Martin to travel to Memphis and speak to a Chapter Meeting (with plenty of time for Q & A)?

Memphis/Shelby County Code Enforcement has adopted the 2003 IBC family of codes as of January 1, 2006. Chapter 4 of the International Mechanical Code contains its own ventilation requirements and does not adopt by reference ASHRAE 62.1.

Chapter 4, for instance, does not offer any method of lowering the OSA requirements of a space based on intermittent occupancy, certainly implying full OSA flow for the entire number of people. This will make auditoriums and other high-occupancy spaces virtually 100% OSA.

I've talked to the attorney for Code Enforcement and he is interested in our recommendation.

What do you think about suggesting that compliance with ASHRAE 62.1-2001 be considered equivalent to meeting the requirements of Section 403 of the 2003 IMC?

Let's discuss and vote at the very end of the Chapter meeting.

Let's thank Mike Bilderbeck for providing this pertinent information.

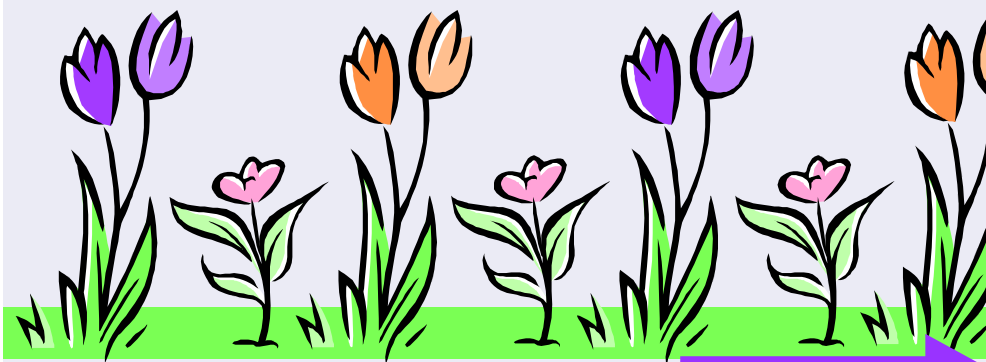
INTRODUCE-A-GIRL-TO-ENGINEERING (IAG) WITH ASHRAE

Program Ideas

- Coordinate a mentor program to include parents - go through the guidance counselors and pair interested girls with a chapter member who can talk to them about mechanical and HVACR engineering. Kick it off with a pizza night dinner for the girls, parents and mentors. Have a speaker, and then break into mentor groups. Allow them to exchange email addresses with their parents consent.
- Work with your local Girl Scout troop - jump on board with any IAG programs they have already coordinated, or tell them about ASHRAE and see if your chapter can coordinate an activity for them.
- Talk to local guidance counselors about their female students who demonstrate an interest in math, science and engineering - through the school, coordinate programs like talks, activity days or tours for the interested girls.

Resources

- ASHRAE is offering buttons (see sample below) and certificates for ASHRAE members to use with the IAG programs they offer. You can request them through the Manager of Student Activities at apruett@ashrae.org
- The official page for IAG is located at <http://www.eweek.org/site/News/Eweek/girlsday.shtml> - here you can access local events, IAG program ideas and sign the pledge! They even have a great information packet available online you can use on the for your program planning.
- The Engineering Education Service Center (EESC) has recently added a page of Women in Engineering Programs. You can access their website at <http://www.engineeringedu.com/wie.html>
- To view data about women in engineering, visit ASEE's site at www.asee.org/womendata - this information may help you as you plan programs.



FREE BUTTONS!



(C) Engineers Week ©